

## CLEANING PRECAUTIONS

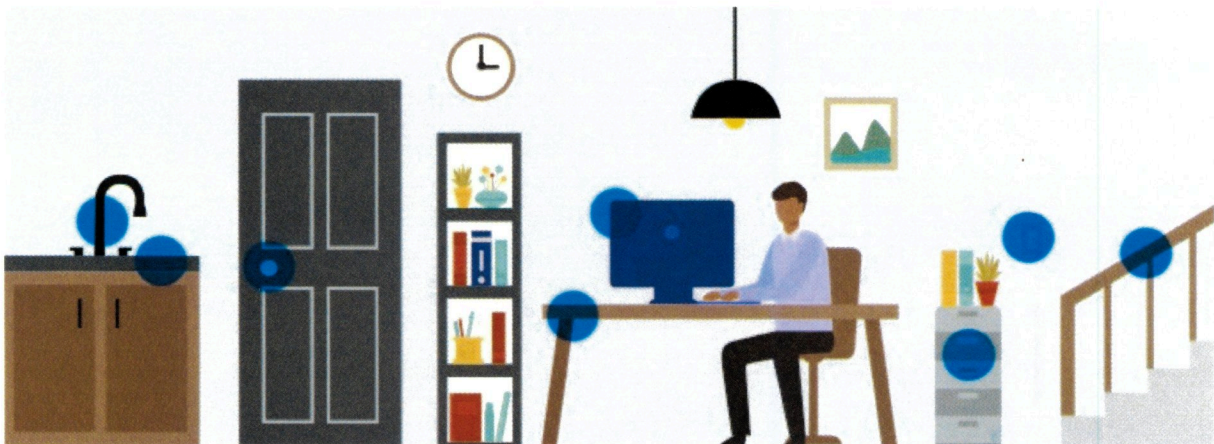
**Take precautions when you clean and slow the spread of COVID-19. You may be forgetting to clean some commonly touched surfaces.**

Based on information from the Government of Canada, it is not always certain how long virus that causes COVID-19 survives on different surfaces, but it seems to behave like other coronaviruses. Preliminary information suggests that the virus may persist on surfaces anywhere from a few hours to several days.

**Proper hygiene can help reduce the risk of infection or spreading infection to others.**

- Regularly clean and disinfect surfaces
- Wash your hands often with soap and water for at least 20 seconds, especially after using the washroom and when preparing food
- Use alcohol-based [hand sanitizer](#) if soap and water are not available
- When coughing or sneezing, cough or sneeze into a tissue or the bend of your arm, not your hand, and dispose of any tissues you have used as soon as possible in a lined waste basket and wash your hands afterwards
- **Always follow manufacturer guidelines for optical equipment and products**

### SPOT THE FREQUENTLY TOUCHED SURFACES.



**Common surfaces including: faucet handles, counter tops, doorknobs, tables, electronics, cabinet handles, light switches, handrails, elevator buttons etc.**

**Additional surfaces in your clinic: Frame and displays, chairs, equipment**

Wipe down these surfaces often with the proper cleaning solutions. You should also identify other commonly used appliances, equipment and rooms including storage, break room, washrooms and kitchen and clean them thoroughly.

## CLINIC CLEANING SCHEDULE

Outline rooms and spaces that need to be cleaned and sanitized, including any special procedures.

Include a team lead who is responsible for the specified area, this individual(s) will take responsibility that the cleaning is complete as necessary, and all appropriate supplies are available. If shifts are taken based on scheduling, indicate this.

Area/Room	Procedure/Details	Frequency	Cleaning Lead(s)
Entrance/Exit Doors			
Reception			
Waiting Room			
Pre-Test Room			
Exam Lane 1			
Exam Lane 2			
Optical Gallery			
Hallways			
Bathrooms			
Break Room/Kitchen			
Doctor's Office(s)			
Trash			